



## XXL ROOF

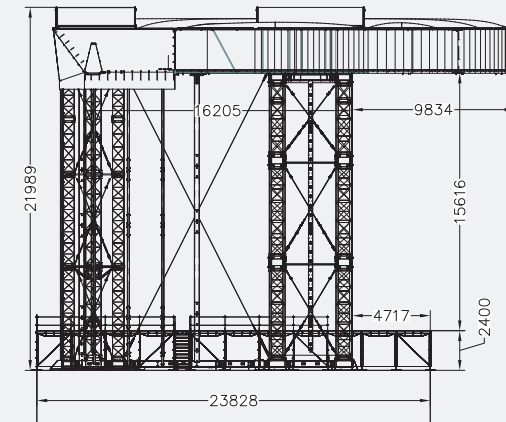
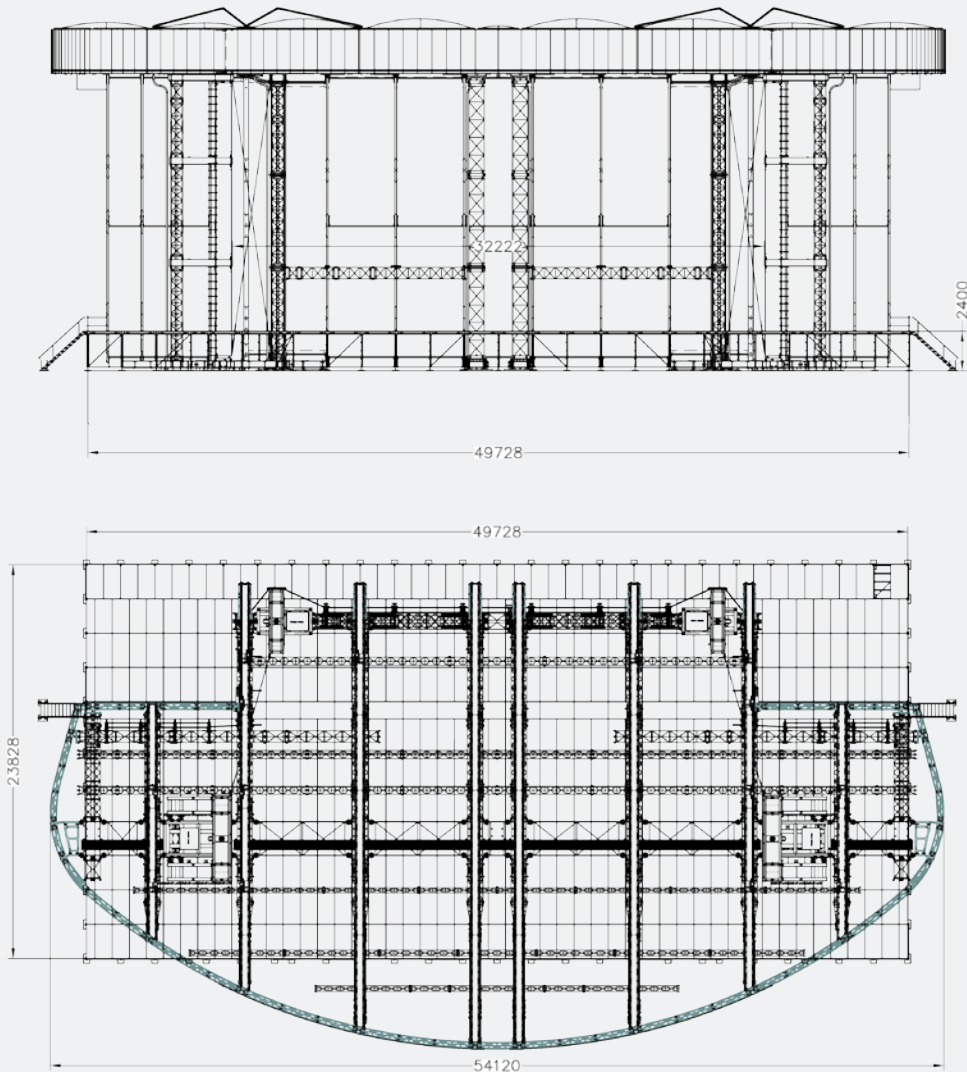
OUR TOP-OF-THE-RANGE ROOF, COMBINING SUPERIOR WEIGHT LOADING CAPACITIES AND ARCHITECTURAL DESIGN WITH CLEAR SIGHTLINES AND THE LATEST STAGING TECHNOLOGY





# XXL ROOF

**WWW.STAGECO.COM**  
IF YOU CAN IMAGINE IT, WE CAN BUILD IT



## PROPERTIES

- Performance area** > 32m x 24m + covered sides
  - Floor height** > adjustable between 0,9m and 2,9m
  - Clearance** > 15,4m
  - Roof capacity** > 70.000kg equally spread
  - Floor capacity** > 500 kg/m<sup>2</sup>
  - Improved safety** > hydraulic lifting system allows for the roof to be build from the ground up.
- Flat air-cushioned roof minimizes wind loads**